



## OS10.0 - User interface

Installation for PC systems with Windows 8.1 or 10

### Inhalte:

- Installation of the OS10.0 Software
- Installation of device driver (USB)

<b>Version:</b>	<b>Description</b>
Os10.0_Installer_01a_oj_d/Dez-2020	First edition

<b>Legal notices:</b>
<p>All contents included in this manual are protected by the terms of use and copyrights of WayCon GmbH. Any reproduction, modification, usage or publication in other electronic and printed media as well as in the internet requires prior written authorization by WayCon GmbH.</p>

# Table of Contents

<b>1</b>	<b>General .....</b>	<b>4</b>
<b>2</b>	<b>Installation of the OS10.0.....</b>	<b>5</b>
2.1	Preparation for installation .....	6
2.2	Installation.....	8
2.3	End of installation.....	10
<b>3</b>	<b>Installation of USB device drivers.....</b>	<b>11</b>
3.1	Windows 8.1.....	11
3.2	Windows 10.....	16
<b>4</b>	<b>Uninstall of the OS10.0.....</b>	<b>17</b>
4.1	Uninstall via Windows Control Panel .....	17
4.2	Deinstallation via Menü.....	17
<b>5</b>	<b>Appendix .....</b>	<b>18</b>
5.1	Requirements for the OS10.0 .....	18
5.2	Requirements for the USB driver installation .....	18

# 1 General

This manual describes the installation process of the OS10.0 user interface on a computer with Microsoft® Windows as the operating system.

The OS10.0 is suitable for the Windows 8.1 and 10 operating systems.

This operator software can be installed from a DVD, a USB stick or a local disk directly. For reasons of convenience, an installation from the local hard drive is assumed.



## **Removing of old OS10.0 software:**

This installer removes old OS10.0 software automatically. If this is not possible, the installation program stops and the old OS10.0 must be removed manually.

## **Multi-User-Installation:**

OS10.0 is **always** installed for all users (multi-user). Installation for a single user is not possible.

## **Administratorrechte:**

The installation and deinstallation of the OS10.0 software require **administrator rights**.

## **.NET Framework 4.6.1**

The OS10.0 software requires the ".net Framework 4.6.1" from Microsoft®.

## **Driver-Installation (only Windows 8.1)**

The OS10.0 **has to be installed before** the driver can be installed. The USB device has to be connected with the PC.

## **2 Installation of the OS10.0**

This operator software can be installed from a DVD, a USB stick or a local disk directly. For reasons of convenience, an installation from the local hard drive is assumed.

Open the directory in which the installation package is saved. Please start the installation package with administrator rights. The installation of the OS10.0 is largely automatic.

## 2.1 Preparation for installation

The preparation for installation is running in the background (silent) and only in an error case a message box is shown with information of this error.

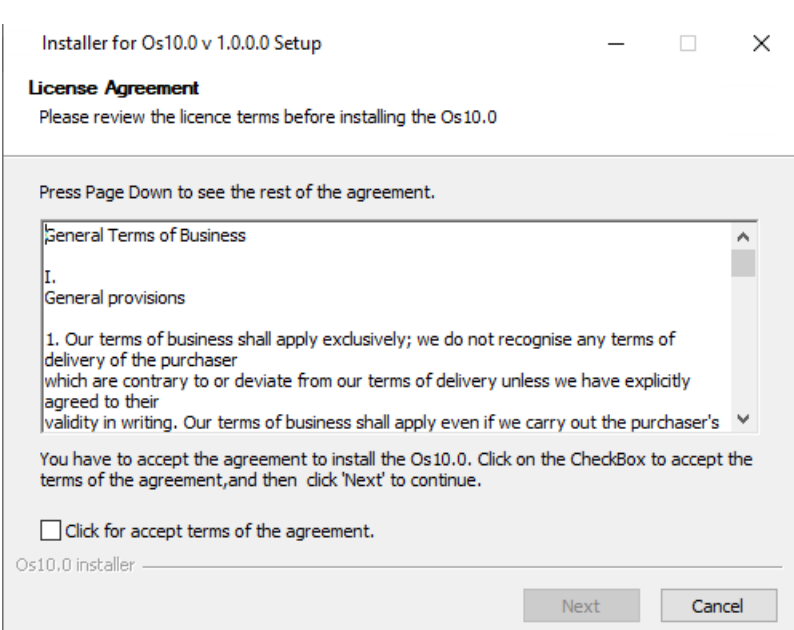
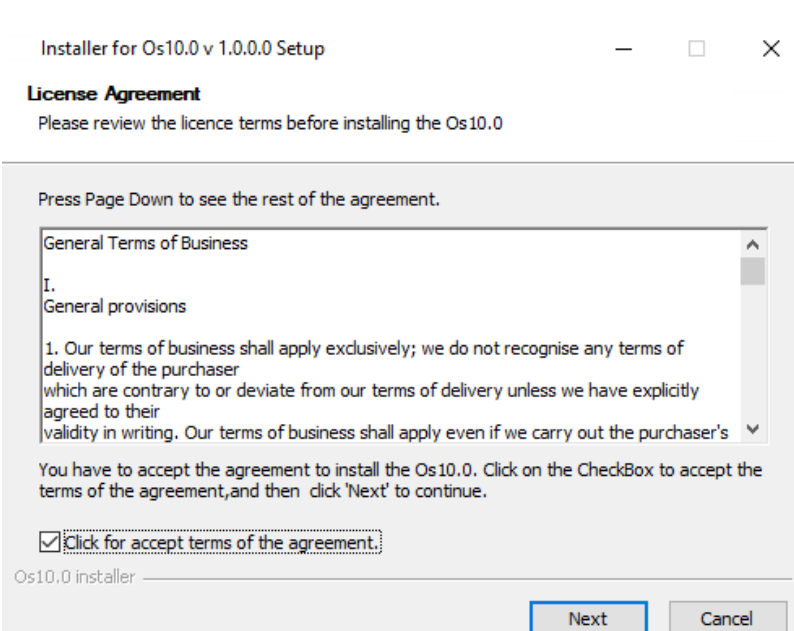
View of the license agreement	
<p>To read the agreement in full, you can scroll down using the arrow button.</p>	 <p>The screenshot shows a window titled "Installer for Os10.0 v 1.0.0.0 Setup" with a "License Agreement" section. It prompts the user to review the license terms before installing the Os10.0. A scrollable text area contains the "General Terms of Business" under "I. General provisions", with the first item stating: "1. Our terms of business shall apply exclusively; we do not recognise any terms of delivery of the purchaser which are contrary to or deviate from our terms of delivery unless we have explicitly agreed to their validity in writing. Our terms of business shall apply even if we carry out the purchaser's". Below the text, there is a checkbox labeled "Click for accept terms of the agreement." which is currently unchecked. At the bottom right, there are "Next" and "Cancel" buttons.</p>
<p>Please click on „<b>Click for accept ...</b>“ to accept the license agreement.</p> <p>To stop the installation please click on the „<b>Cancel</b>“ button and for starting please click on the „<b>Next</b>“ button.</p>	 <p>This screenshot is identical to the previous one, but the checkbox "Click for accept terms of the agreement." is now checked. The "Next" button is highlighted with a blue border, indicating it is the active or recommended action.</p>

Figure 2-1 license agreement

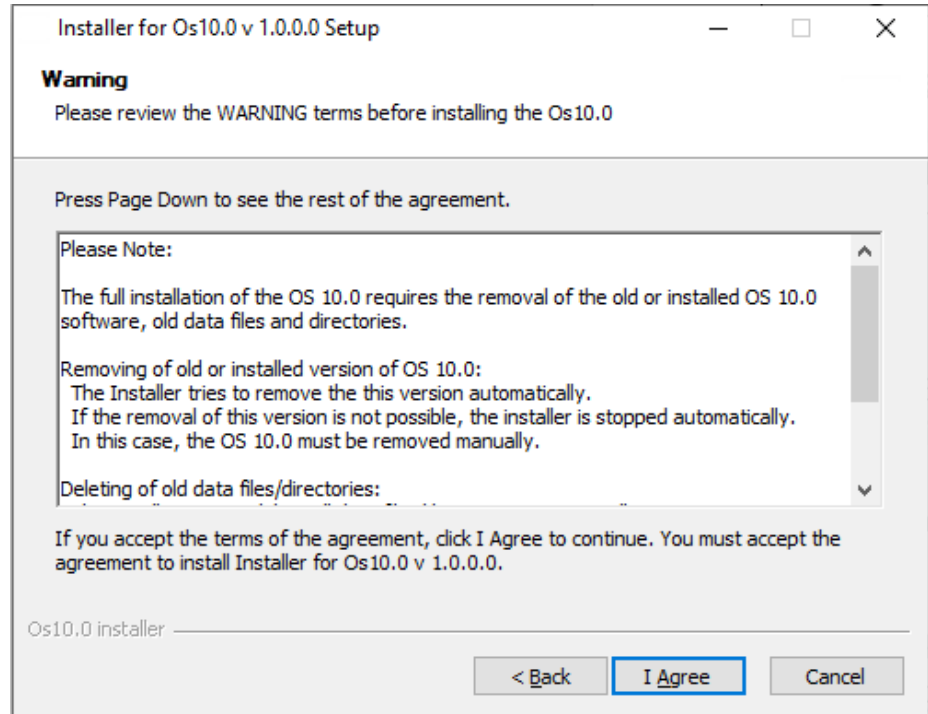
Figure 2-2 accept license agreement

## View of the license agreement

To read the warning notices in full, you can scroll down using the arrow key.

Please click on the „**I Agree**“ button to accept this warning notes and to start the installation of the OS10.0.

For stopping the installation please click on the „**Cancel**“ button.



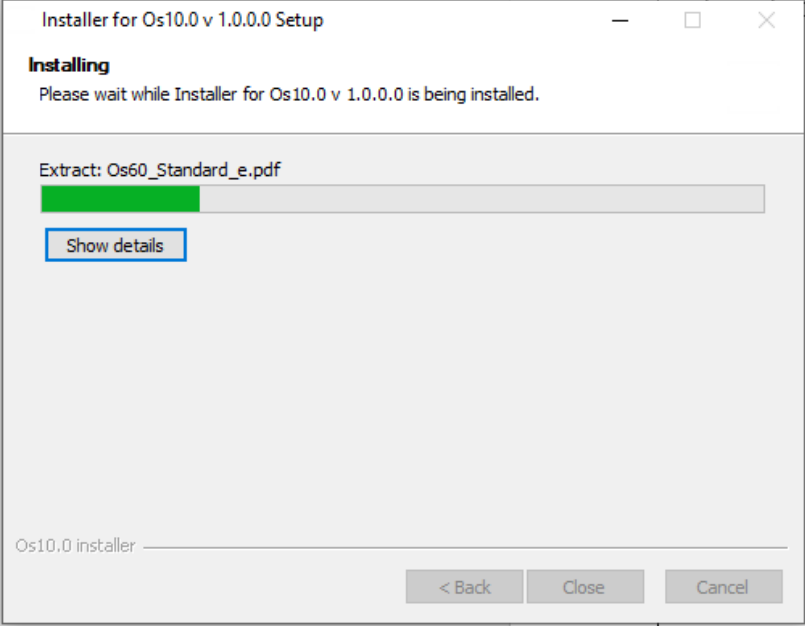
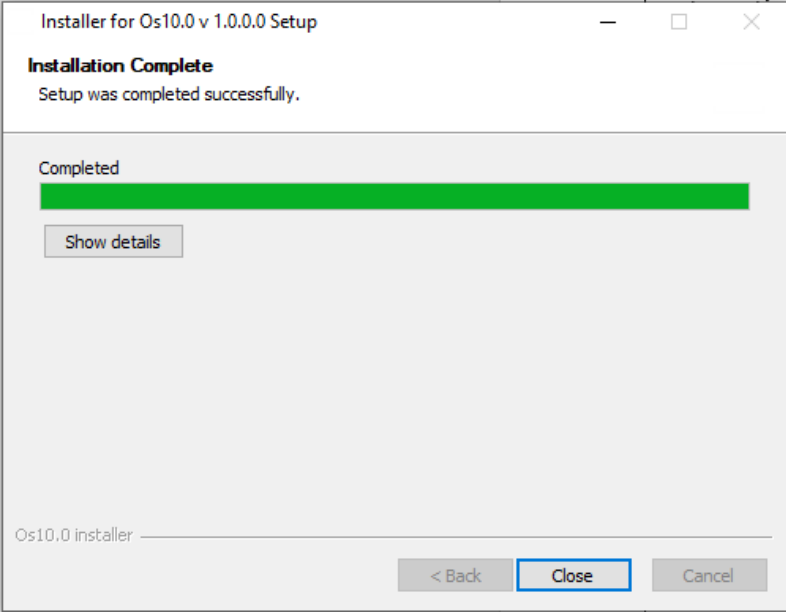
**Figure 2-3** Warning notices



The installation program automatically checks whether the operating system used supports it. Only in the case of an unapproved operating system (see also appendix) will a warning message be issued or the installation program stopped.

The installation program then checks whether the administrator rights required for execution are available. If not, the required administrator password is automatically requested.

## 2.2 Installation

Installation	
<p>The installation runs automatically.</p>	 <p><b>Figure 2-4</b> Installation</p>
<p>Please click on the <b>Close</b> button to finishes the installation.</p>	 <p><b>Figure 2-5</b> Finish of the installation</p>



The OS10.0 requires the .net Framework 4.6.1 from Microsoft. This framework is included in the installation package.


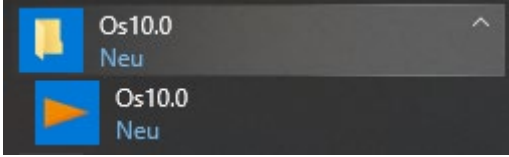
The installation program checks whether the .net Framework 4.6.1 is installed on the computer. If not, the installation will start automatically. Please follow the instructions in this installation package of the .net Framework 4.6.1.



The computer may need to be restarted.

## 2.3 End of installation

After the installation is complete, OS10.0 can be started in two ways.

Starting of the OS10.0	
Via Desktop Icon	 <b>Figure 2-6</b> OS10.0: Desktop Icon
Via Start menu	 <b>Figure 2-7</b> OS10.0: Startmenü

# 3 Installation of USB device drivers

## 3.1 Windows 8.1



Please note:

The OS10.0 **have to be installed before** driver installation can be executed. For the installation of the USB-Device driver, **administrator rights** are required. Further, the USB-Device **have to** be switched on and already connected to the USB port of the PC.

The driver installation needs an **INF file** (also called **Setup Information file**), which can be found in the following directory of the already installed OS10.0:

“C:\Program Files (x86)\Os10.0\Drivers\Win7\_8”...

The software will detect and select the respective file automatically.

Open the device manager: Start → Control Panel → Device Manager

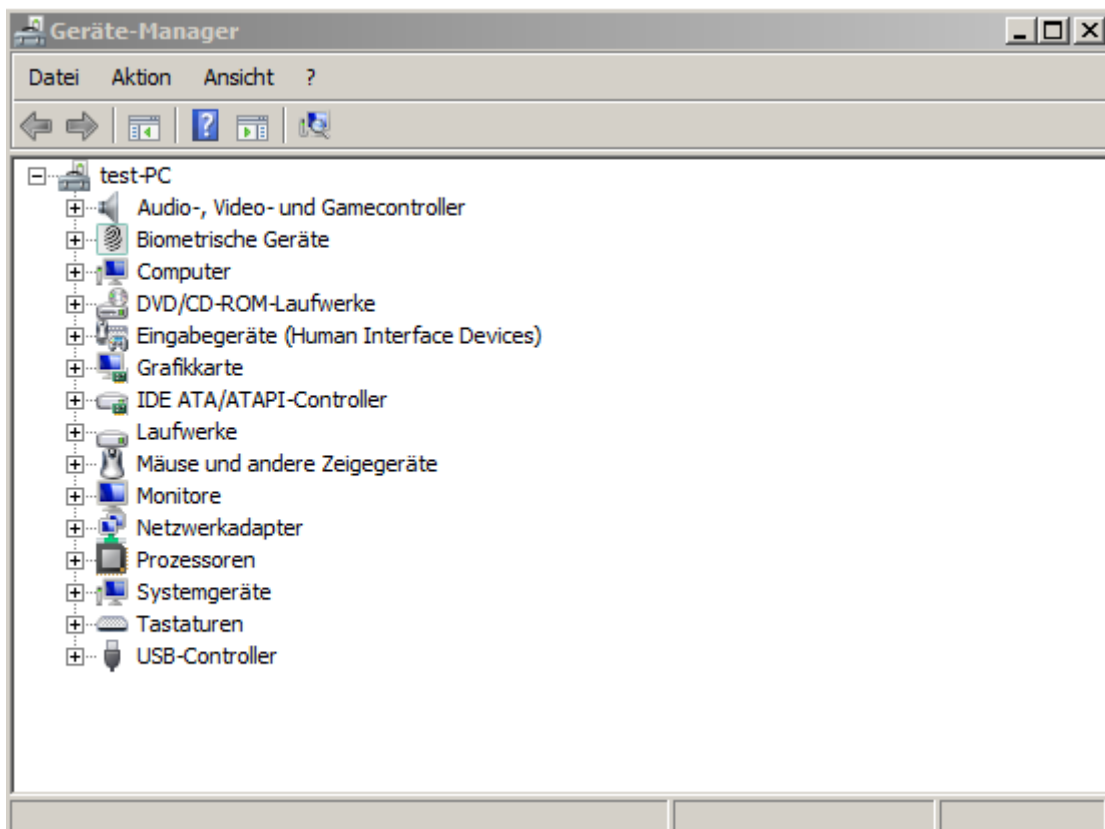
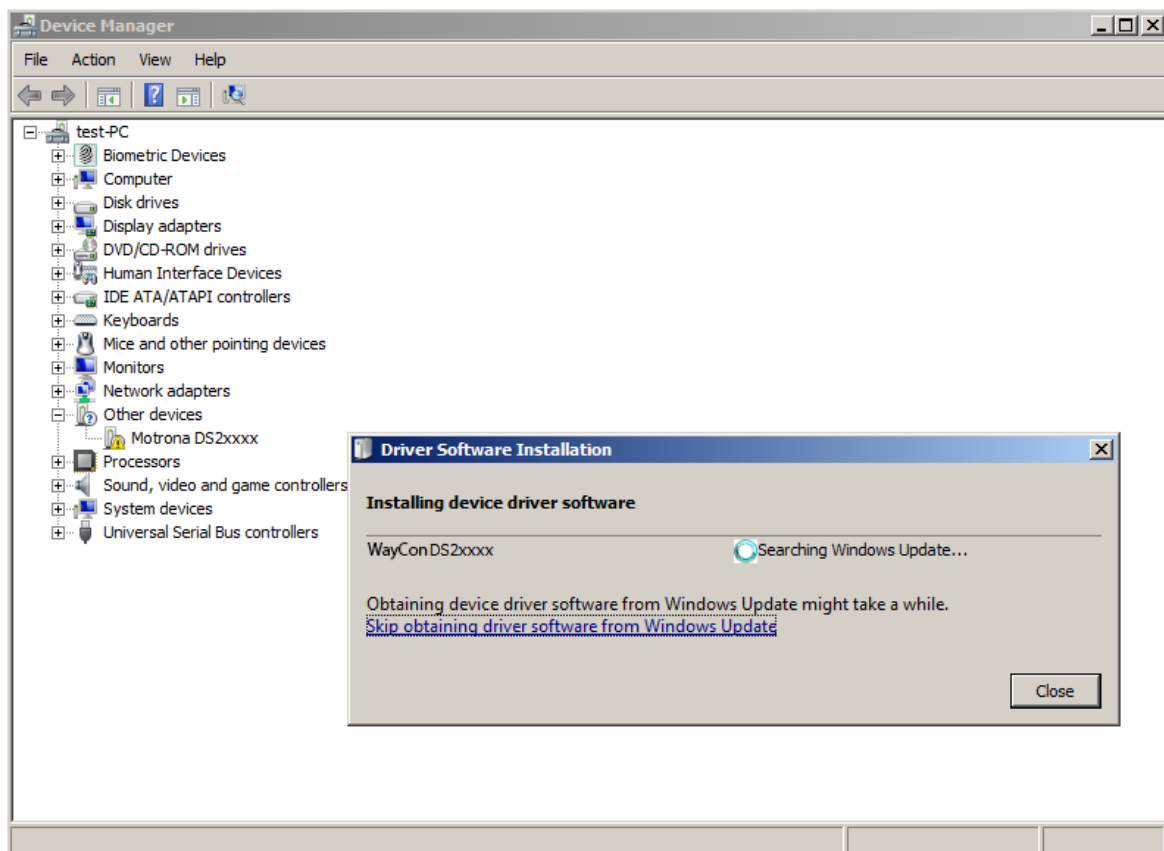


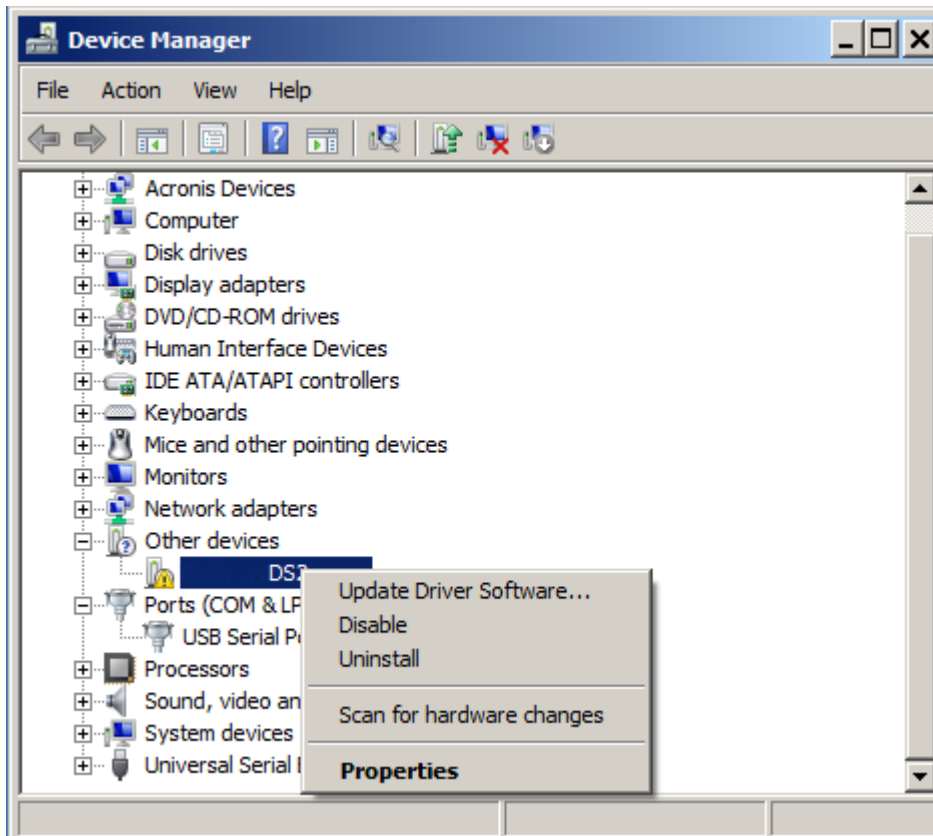
Figure 3-1 Driver installation: device manager

Connect the device. Depending on the current configuration of the operation system a submenu "Other device" is added. If the operation system tries to download the device driver software via windows update, abort this by clicking "**Skip obtaining driver software from Windows Update**".



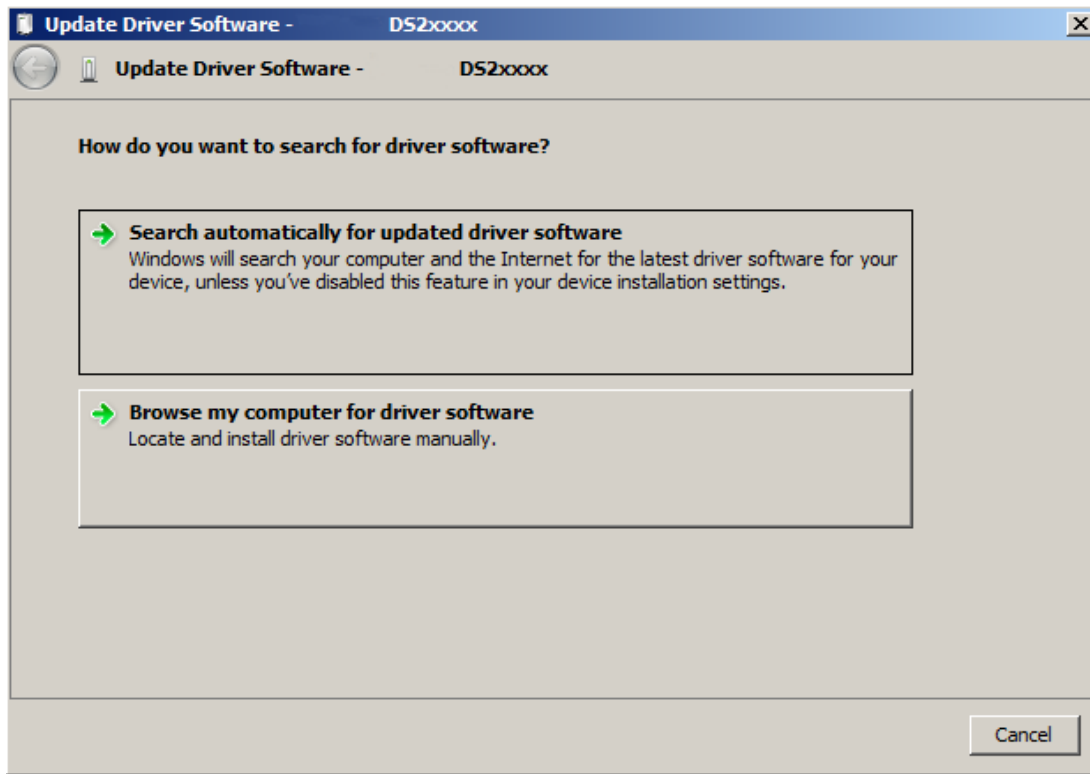
**Figure 3-2 Driver installation: Windows Update ... abort**

Clicking with the right mouse-button on the entry "**DS2xxxx**", a pop-up menu will be opened. Select ... "**Update Driver Software**" .....



**Figure 3-3 Driver installation Pop-up "Update Driver Software..."**

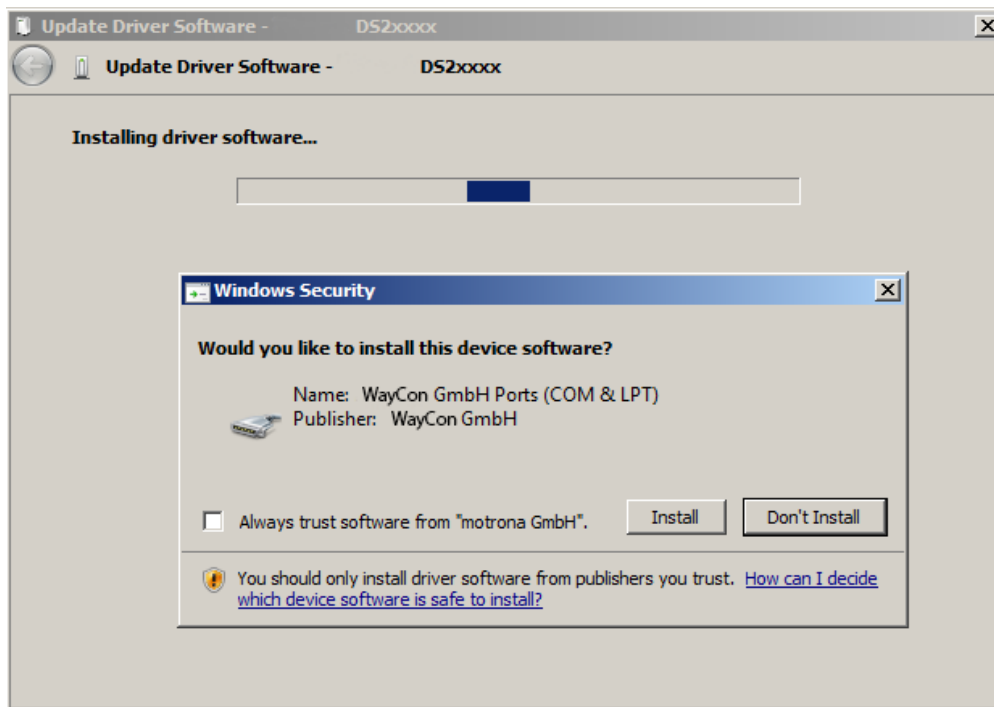
Then select **“Browse my computer for driver software”** in the windows dialog **“Update Driver Software”**.



**Figure 3-4 Selection window “Browse my computer for driver software”**

Use `C:\Program Files (x86)\Os10.0\Drivers\Win7_8` as search path and click **“Next”** to continue...

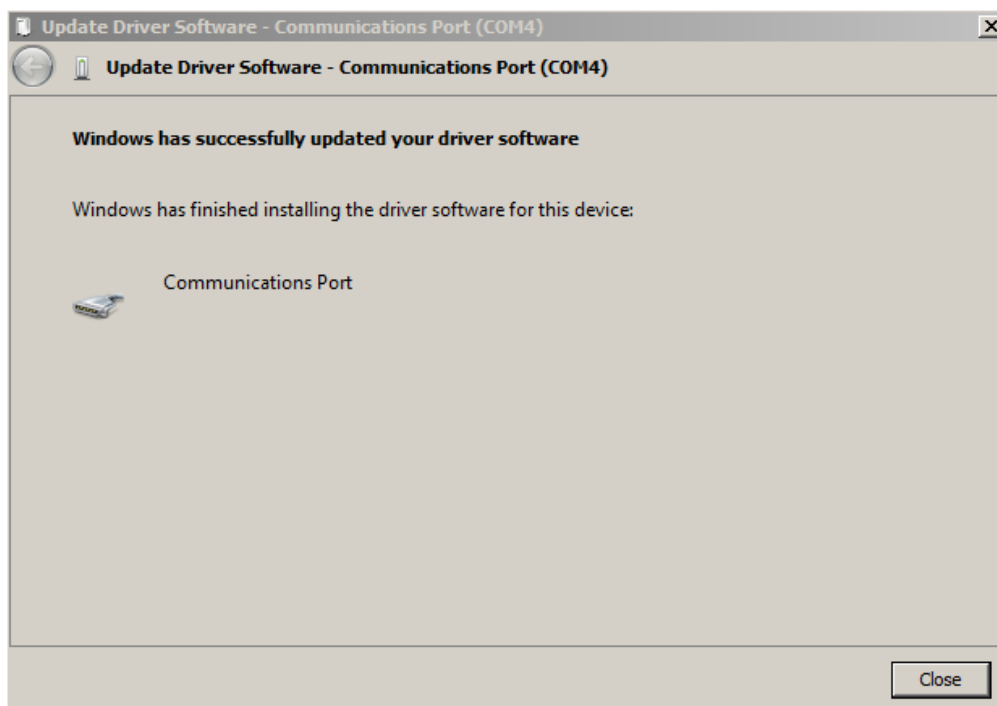
A new window **“Windows Security”** appears.



**Figure 3-5** Security message after signature check

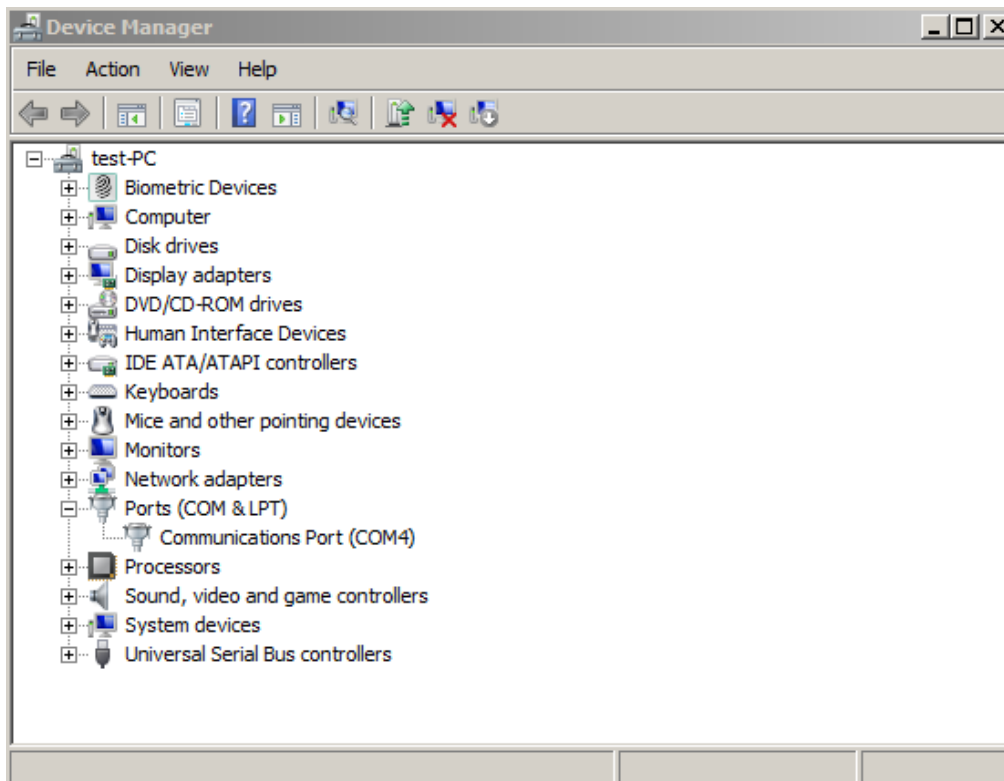
Clicking on **“Install”** starts the installation.

When the installation of the device driver is completed, click the **“Close”** button to finish the installation procedure.



**Figure 3-6** Installation completed, close and finish

The new device has automatically been added to the item **“Ports (COM & LPT)”**.



**Figure 3-7** New device added to Ports (COM & LPT)

The driver installation is completed...

## 3.2 Windows 10

Windows 10 detects the DS230 and configures the necessary drivers automatically. A driver installation by the user is no longer necessary.



## 4 Uninstall of the OS10.0

Depending on the operation system, the OS10.0 operator surface can be uninstalled via the **Windows Control Panel** (Windows 8.1 and 10) or via the **uninstall menu** (not Windows 10).



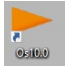
### Please note:

Only the OS10.0 is uninstalled.  
"User directory" are NOT deleted (see OS10.0 manual).

### 4.1 Uninstall via Windows Control Panel

To uninstall the OS10.0 via **Windows Control Panel**, open **Programs and Features** via

**Start → System Control Panel → Programs and Features**. A list of all installed software programs will appear on the screen.

By marking the  entry with the right mouse button, one of the following options can be selected:

- „**Uninstall/change**“ and in the next window
- „**Remove the application from this computer**“.

The uninstallation starts automatically.

### 4.2 Deinstallation via Menü

The uninstallation program  can be started directly via **All Programs → Os10.0 → Uninstall** (see figure below).

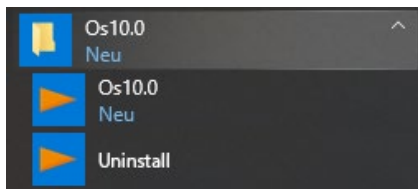


Abbildung 4-1 Deinstallationsmenü

The uninstallation starts automatically.

# 5 Appendix

## 5.1 Requirements for the OS10.0

<b>Supported Operating System:</b>	Windows 8.1 (32 oder 64 Bit) Windows 10 (Version 1511 build 10586.104; 64 bit)
<b>Frameworks from Microsoft:</b>	Net Framework 4.6.1

## 5.2 Requirements for the USB driver installation

The OS10.0 have to **be installed before** the driver installation can be started.  
For the installation of the USB-Device driver **administrator rights** are required and the  
USB-Device **have to** be connected to the PC.